

A ROUND UP OF THE WEEK AT LAUREL PARK SCHOOL

Headteacher's Message - Adele Christofi

Dear Laurel Park community,

I hope this newsletter finds you well and that you all enjoyed the extended Bank Holiday weekend. As we move further into the summer term, I'm delighted to share some of the exciting events and achievements that have been taking place at our school.

Our Year 11 pupils have been making significant strides in their academic journey. They've successfully completed their Spanish speaking exams, marking an important milestone in their GCSE preparations. The public exams have now commenced, and I'd like to extend a special congratulations to our drama students who have already finished their exams. Your hard work and dedication are truly commendable.

This week, Laurel Park had the honour of hosting Enfield's Dragon's Den competition in collaboration with the Social Enterprise Academy. It was a proud moment to see our pupils showcase their leadership skills and represent our school with such distinction. Our team, who were runners-up last year with their innovative cultural cookbook project, shared their experiences with younger students from across the borough. I was particularly impressed by Trevaun, who took on the role of one of the Dragons, demonstrating the leadership qualities we strive to nurture at Laurel Park. As always, our students were exemplary ambassadors for our school.

On Thursday of this week, our LPS DJs brought the schoolhall to life in the first ever laurel Park Pulse Party! It was a chance for a number of students across years 7-10 to showcase the work they had been doing with DJ Hayley as part of their DJ lessons. Each student had their playlist and did a set to a very engaged audience. It was lovely to see parents and students from across year groups supporting each other.

In our ongoing commitment to enriching our pupils' educational experiences, our Year 7 students had the opportunity to visit the Tate gallery on Friday. This trip was an integral part of their art enrichment programme, providing a wonderful platform to inspire creativity and broaden their artistic horizons.

This week Mr Hubbard and Mrs Anscomb presented some of the great work that we are doing at a Teach Meet that was attended by other Enfield secondary schools. Sharing the great practice that we are embedding with colleagues from around the borough is always a great opportunity. In our commitment to staff CPD, it's also a great chance for us to learn from what other schools are doing.

While we celebrate these achievements, I must also address a few important notices. Firstly, I kindly remind all parents of their responsibility in ensuring that their children come to school in the correct uniform. Your support in this matter is crucial in maintaining our school's standards and fostering a sense of community and belonging.

Secondly, you may have seen Enfield Borough's recent announcement regarding the banning of smartphones in primary schools and Year 7 from September 2025. As a school, we are fully supporting this initiative, which has also been introduced in Barnet. We believe this step will enhance focus and engagement in the classroom. More detailed information about this policy will be communicated in a separate letter.

As we continue through this term, I am constantly inspired by the resilience, creativity, and enthusiasm of our pupils. Your ongoing support as parents and guardians is invaluable in creating a thriving learning environment at Laurel Park.

Adele Christofi
Headteacher

A big round of applause to the following students for their outstanding performance on Educake this week!

Y7: Aleks S
Y8: Nicole S
Y9: Precious A
Y10: Lexi E
Y11: Ismail M

**You Are
amazing!**

Keep up the great work, everyone! Your hard work and dedication are truly inspiring.

Educake can be accessed here

<https://my.educake.co.uk/login>

Students are regularly set homework on here and have the option to select their own questions too.



Can we have some feedback on the new Week 1 and Week 2 menu?

We'd love to hear your thoughts! Let us know what you liked, what could be improved, or any suggestions you may have.

Click the link below to share your feedback:

WEEK1
WEEK2



**Next week is
Week 2**

Last week, 30 Year 10 students took part of the Urban Plan workshop. The students had to work as a team in order to plan how they will build a town. They were all given a budget and a set of parameters for their new town. They have to create a company name and present to their peers and industry experts before the winning group were chosen

Well done to Nuhan, Nathan, Pavlo, Oliver, Alex P and Riyansh who were our winning team!

They now go through to the final which is hosted in central London in July.



Year 11

Well done to all our Drama, Turkish, Film Studies and Business Studies GCSE students who have completed their first written exams this week. We also had all students completing their Spanish speaking exams as well. Our first full cohort exam on Monday which is English Literature.

Lots of revision and exam briefing sessions are taking place before each exam. It's been great to see how hard the Year 11s are working.

Also have a look at our Instagram or Tiktok account for our fun countdown to exam posts. The students loved making the sunglasses one!

KEEP IT UP



Mental Health Awareness Week

Next week is Mental Health Awareness Week and Mr Dunnage, our SENCO will be leading assemblies on this. At the end of the newsletter, you will find some helpful information about some support should you need it.

mental health matters

Self care

A Huge Thank You to Mr. Martin – Deaf Awareness Week Assembly

This week is Deaf Awareness Week. Mr Martin, our Deputy SENCO led our assembly, raising awareness of what it is like to be a deaf person, the difference between sign language and lip reading, and how Rose Ayling-Ellis appearing on Strictly Come Dancing and Doctor Who is raising the profile of the deaf community and its needs. This years theme is 'Beyond Silence' and it was lovely to learn some sign language as part of the assembly.

Mr Martin has also put together a Deaf awareness quiz for students to have a go at. Students are also able to sign up for a BSL course which Ms Christofi has agreed to fund for our students.

Details for them can be found on GC.



A huge well done to Salah Yahya, Dea and Zera, who have been elected to represent Enfield's young people on the Enfield Youth Council! These students have shown incredible integrity, determination, ambition, and excellence—core values we are proud to uphold at Laurel Park. Their hard work, leadership, and commitment to making a difference in the community truly demonstrate what it means to be a Laurel Park student.

We know they will represent our school and all young people in Enfield with pride and purpose.

For more on the story, visit: [New youth councillors elected in Enfield](#)



WELL DONE



Kung Fu Club

By Mr London

COME ONE
COME ALL

This is an exciting opportunity to develop discipline, confidence, and physical fitness through the traditional Chinese martial art of Kung Fu.

Kung Fu Club is open to all year groups, with sessions designed to improve focus, coordination, self-control, and self-defense skills in a supportive and engaging environment.

You can feel confident knowing that you will be taught high quality lessons by double award winning 2025 UK Martial Arts Hall of Fame inductee Mr London (Sifu London), who's experience spans over 33 years!

All you need is your
PE kit and a bottle
of water.
Every Monday
3.25pm - 4.30pm
Venue: Main Hall.



Our year 10 students started the term with a bang, as they presented to neighbouring schools about their experience as runners up in the Social Enterprise Awards 2024. Students recalled their experience and offered advice about the importance of a detailed business plan, time management and presenting their pitch. The Groups speech and recall was both insightful and inspiring, with reference to their Cookbook and how they developed their idea to combat racism. It was great to see our own Trevaun Boothe as a selected Dragon, giving advice and guidance to this year's entries.

Well Done to the CookBook Crew- Lexi, Patrick, Trevanique, Joy, Micha and Trevaun!!!!





Important Dates!



14th May – Year 10 Harry Potter Studios Trip

22nd May -
Guitar and Drums Showcase 5PM
Year 8 Armed Forces Cricket Trip

HALF TERM BREAK
Monday, 26 May – Friday, 30 May 2025

10th June - Culturally Speaking Trip

11th June – Year 7 Parents Evening 3:45pm – 6:15pm

16th June –
Year 10 Mocks Begin
Culturally Speaking Work Shop

23rd June – KS3 Core Subject Mock Exams Begin

24th June – Year 11 Prom

10th July – Summer Achievement Week

15th July – School Trip Day
Thorpe Park (Year 9 & 10)
Whipsnade Zoo (Year 7 & 8)

16th July – Culture Day

17th July – Sports Day

18th July – End of Term



Laurel Park School Champions Alternative Curriculum for Student Success

At Laurel Park School, we believe every child deserves a place to thrive, to be understood, and to feel truly included. We are more than just a school – we are a supportive community, built around the unique needs and strengths of every learner. "Our inclusive approach makes sure that every student, regardless of their circumstances, has the support they need to thrive. We offer a range of tailored activities and interventions, designed to nurture confidence, creativity, and emotional wellbeing". Miss Christofi (Headteacher)

“Our boxing gym and weights room offers so much more than physical exercise. It's a space where students develop resilience, focus, and confidence. It teaches discipline, respect, and self-awareness – and for many of our learners, it becomes a vital tool for channeling energy and managing emotion in a positive, empowering way". - Mr Akubuko (Assistant Head - Complex Behaviour)

Laurel Park School has pioneered a transformative approach to education through the introduction of an alternative curriculum designed to meet the diverse needs of its student body. With a focus on improving engagement, behaviour, and achievement, the initiative has already begun to yield promising results. The alternative curriculum, which runs alongside the prescribed national framework, offers students opportunities to explore vocational and life skills through practical learning that align with their individual strengths and interests. For many, this approach has been a game-changer. We've seen a marked improvement in student engagement and behaviour since introducing the new programme; students who once struggled in traditional classroom settings are now motivated and focused. They're passionate about what they're learning because it feels relevant and empowering.



One of the curriculum's core strengths lies in its ability to tap into students' natural talents and aspirations. Whether it's through digital media, boxing, horticulture, animation play therapy, equestrian therapy, lexia reading programmes or the nurture group, learners are developing valuable skills that not only enhance their confidence but also open doors to future careers. Laurel Park's alternative curriculum is not just about flexibility; it's about engagement and empowerment. Whether through project-based learning, hands-on experiences, or creative expression, the school helps students develop critical thinking, resilience, and a lifelong love of learning.

Teaching and Learning



”

"In our horticulture program, learning happens through connection with nature. Whether planting seeds, nurturing vegetables, or watching flowers bloom, students experience the power of growth firsthand. It's hands-on, therapeutic, and full of teachable moments that build responsibility, patience, and pride".

Mr Martin (SEND)

”



”

"Our Lexia Reading Programme provides personalised learning, helping every child to grow their literacy skills at their own pace."

Ms Nicou (English)

”

Success is not being defined solely by exam results anymore. Instead, Laurel Park is celebrating a broader spectrum of achievements—certifications in practical subjects, improved attendance, reduced behavioural incidents, and, perhaps most importantly, the visible pride students are taking in their work. As Laurel Park School continues to evolve its alternative curriculum, it stands as a model for how education can—and should—adapt to meet the needs of all learners. By recognising that success comes in many forms, the school is preparing its students not just to pass exams, but to thrive in life.

Why Choose Laurel Park?

Choosing the right school for your child is one of the most important decisions a parent can make. Laurel Park School stands out as a nurturing and forward-thinking environment, especially for families seeking inclusive education and a curriculum tailored to individual needs. At the heart of our school's ethos is a commitment to inclusivity. The school embraces students from all backgrounds and learning abilities, fostering a culture of respect, acceptance, and support. Teachers and staff are trained to understand diverse learning styles and create safe spaces where every student feels valued and understood. Rather than a one-size-fits-all approach, we provide personalized learning pathways that recognize the unique strengths, challenges, and interests of each child. This ensures that all students—regardless of academic level or learning needs—are given the opportunity to thrive.

For parents who want their children to be seen, supported, and inspired, Laurel Park School is a place where every student has the opportunity to flourish. It's more than a school—it's a community that celebrates individuality and prepares children for a confident, inclusive future.

Well Done Nicole. We have a Poet in our midst.

The gilded hall was bathed in candlelight, As music wove
through whispers soft and low. The air was rich with scents of
rose and white, While silken gowns swayed gently in the glow.
Then fate, with steady hands, did lead me near, Where you
stood shining, beauty yet untamed. Warm, welcoming hazel
eyes gazed upon mine, sincere, And in that glance, my soul
was softly claimed. We danced as though the stars had stopped
to see, Each step a promise whispered through the air. A
fleeting touch, a spark so wild and free, As if our hearts had
always known we'd pair. Though but a night, I knew love's light
had grown, For in your eyes, I found a world my own. //

Whispers in the rain The silver sky begins to weep, Soft footsteps
dance where puddles seep. A misty hush, the world stands still,
As raindrops trace the window's sill. Beneath the storm, she
walks alone, Porcelain skin like ivory stone. The water clings, a
lover's touch, Yet chills her bones a little much. The thunder
hums a solemn tune, A fleeting ghost beneath the moon. Her
lashes glisten, framed in black, As droplets kiss and tumble back.
The streetlights flicker, dim and cold, Yet she remains, serene
and bold. A living doll with glassy eyes, Reflecting storms in silver
skies. Each tear of heaven paints her pale, Like fragile lace so
thin, so frail. Yet in the rain, she stands so tall, Unmoved,
untouched—above it all. The night wind whispers through the
street, A song of sorrow, low and sweet. Yet in her heart, a quiet
fire, That rain nor storm could quench or tire. The clouds will
pass, the dawn will rise, Yet she still holds the weeping skies. A
porcelain doll with sorrowed grace, Yet not a single tear to trace.
For rain may fall and winds may weep, But secrets in her heart
run deep.

***And though the storm may rage and call,
She stays unbroken through it all.***

// Star-Crossed

Two souls adrift in fate's cruel tide,
Bound by love yet cast aside.
The stars above, in distant glow,
Whisper secrets they'll never know.

A touch, a glance—then torn apart,
The universe a jealous heart.
Yet in the night, their echoes gleam,
Meeting only in a dream.

//

Lady of shallot poem

Within a tower high by river's bend,
She weaves her silent fate in threads of gloom,
A shadowed life no soul may comprehend,
Condemned to view the world within her room.
She sees the sunlight touch the dancing leaves,
But only through a mirror's muted pane;
The laughter on the breeze her soul deceives,
For all she knows is echo, not the strain.
But when Sir Lancelot rode by in flame,
With sunlight caught like stars upon his brow,
She turned to look and thus betrayed her name,
The web unwinds, her fate is sealed somehow.
She floats downstream, her name a whispered song,
A tale of beauty doomed for loving wrong.



Character Education focus of the week

The vision of Laurel Park School is to develop well rounded students who have the ambition and determination to excel in life whether this be through academic study, vocational training or employment.

Alongside this, we have a commitment to developing character and integrity across the school and wider community. Opportunities are provided outside of the taught curriculum to develop core life skills, preparing our students to be proud global citizens.

Finally, Laurel Park is a school where all members of the community are treated with care and respect, whilst supported both with their well-being and their academic aspirations.

This is achieved through our Core Values of **Integrity, Determination, Excellence** and **Ambition**

Each month we will see a Skill and each week we will try to link this Skill to one of our Values.

This month's Skill is Teamwork!

'Talent wins games, but teamwork and intelligence win championships.'

-Michael Jordan

This week's value is Integrity !

How can Teamwork help us achieve Integrity ?



- **Mutual Accountability:** Team members hold each other accountable for their actions, ensuring that everyone adheres to agreed-upon ethical standards.
- **Diverse Perspectives:** Teamwork brings together diverse viewpoints, which can help making more ethical decisions by considering all possible implications and outcomes.
- **Support system:** Teamwork provides a support system where members encourage each other to stay true to their values, even in challenging situations.

Students will be presented this in assembly each week but please also speak to them at home





SUPPORT

INFORMATION

**MEET OUR
SEND TEAM**

**Parents and the local
community are welcome to join
our SEND Team at our monthly
events.**

**WEDNESDAY
14TH MAY 10AM
TO 11.30AM**

Only 3
spaces
left!

Live on
ParentPay now

TRIP TO ROME

Sunday 24th May - Tuesday 26th May 2026

Breakfast and Dinner
included

Guided tours for all
activities

Flights and
Accommodation included

Photo ops at every
destination!

Unlimited public
transport included!



£100 deposit
to secure
your place

£750 total with
a payment plan
option

SUPPORTED BY



Lime

LONDON
CYCLING
FESTIVAL

ENFIELD



SUNDAY 25 MAY 2025



Free
Lime bike hire
available!
Booking required



Enfield Library Green EN2 6AX
Sunday 25 May 2025

Registration opens at 9.15am

Event closes at 1pm



Scan here for all
the event details

**Join a family-friendly, led bike ride
around Enfield.**

Feeder rides start at 8.30am at

- The Fox Pub, Palmers Green
- Edmonton Green Station

Main ride starts at 10am at

- Enfield Town Library

Including: •Dr Bike •Bike
Security Marking •Safe
Cycling Information
•Smoothie Bike •Cycle Skills
Training •Kids Cycle Obstacle
Course

Find out more and book your ride place: londoncyclingfestival.org.uk

ORGANISED BY



Part of Enfield Council's
Journeys and Places
programme



HOW TO GET INVOLVED

Enfield Youth Development Service (YDS):

- Offers a range of activities for young people aged 11 to 19 (or 25 for those with SEND).
- They provide a range of positive activities via our 5 open access youth centres, including: multi-media, health and fitness, music, dance.
- Provides positive activities and a Youth Leadership Academy for those in youth clubs.
- Contact: youthenfield@enfield.gov.uk or 020 8379 5800.
- <https://www.enfield.gov.uk/services/leisure-and-culture/youth-development-service>

Enfield's Youth and Family Hubs:

- Bring together various services for children and families, offering support up to age 19 (or 25 for those with SEND).
- Include a family hub navigator to help access support.
- Examples include the Ponders End and Craig Park Youth and Family Hubs.
- <https://www.enfield.gov.uk/services/children-and-education/youth-and-family-hubs>

Youth Alive Social Prescribing:

- The Youth Alive programme is for children and young people aged 10 to 19 who live or study anywhere in Enfield.
- It encourages children and young people to look after their wellbeing, build their confidence and happiness, feel empowered, learn a new skill and take part in physical activities including basketball, football, cooking, acting and drama lessons.
- <https://www.enfield.gov.uk/healthandwellbeing/maternity-childrens-and-family-health/youth-alive>

10 Top Tips for Parents and Educators

FOSTERING A SENSE OF BELONGING

Feeling a genuine sense of belonging is essential for the emotional and social development of children and young people. Belonging significantly boosts self-esteem, resilience, and mental wellbeing, reducing feelings of isolation and anxiety. This guide provides practical strategies to help parents and educators cultivate inclusive environments, enhancing both academic outcomes and overall happiness among young people.

1 CELEBRATE INDIVIDUAL DIFFERENCES

Acknowledge and celebrate the uniqueness of every child. Promoting diversity and inclusion creates an environment where differences are valued rather than stigmatised. This acceptance empowers children to confidently express their identities and feel genuinely included, fostering a robust sense of belonging within both school and home settings.

2 CONSISTENT COMMUNICATION

Regularly communicate and actively listen to children, showing genuine interest in their thoughts and experiences. Creating open communication channels helps young people feel heard and valued. This approach not only builds trust but also reinforces children's perception of themselves as a vital part of their family, school and community.

3 MEANINGFUL PARTICIPATION

Give children opportunities to actively participate and contribute, whether in classrooms, at home, or in community activities. Meaningful participation helps children feel their input matters, reinforcing a sense of purpose and value. Including them in decisions and responsibilities enhances their self-worth, promoting a deeper sense of belonging and inclusion.

4 FOSTER STRONG RELATIONSHIPS

Support and encourage positive relationships between peers, educators, and families. Strong, healthy relationships significantly impact a child's sense of belonging, providing emotional support and reducing feelings of loneliness. Facilitate social interactions through group activities, teamwork, and collaborative learning to strengthen these vital connections.

5 CREATE INCLUSIVE SPACES

Design environments that reflect diversity and are welcoming for everyone. Inclusive spaces where all children see themselves represented can dramatically improve their feelings of safety and acceptance. Consider classroom displays, books, and resources that celebrate various cultures, abilities, and backgrounds to visibly reinforce inclusivity and belonging.

6 MODEL POSITIVE BEHAVIOUR

Adults play a crucial role by demonstrating inclusive, empathetic, and respectful behaviours. Modelling positive interactions and attitudes sets a clear standard for children to follow. Children are likely to replicate inclusive behaviour, creating a supportive community atmosphere where everyone feels accepted and valued for who they are.

7 BUILD EMOTIONAL LITERACY

Teach and encourage emotional expression and understanding among children. Developing emotional literacy enables young people to articulate their feelings and empathise with others. An emotionally intelligent environment cultivates mutual respect and compassion, fostering a deeper sense of belonging and interpersonal connection within groups.

8 SUPPORT PEER MENTORSHIP

Encourage peer mentorship or buddy systems within educational settings. Peer support enhances feelings of connectedness and security, reducing feelings of isolation. When children support one another, they naturally build community bonds, nurturing a supportive culture where belonging and friendship thrive.

9 RECOGNISE EFFORTS REGULARLY

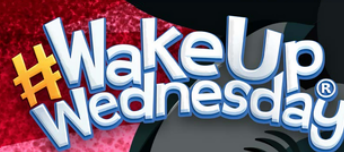
Consistently acknowledge children's contributions and achievements, however small. Recognition reinforces a child's understanding that their presence and efforts are important. Celebrating individual and collective successes helps cultivate a positive environment where children feel acknowledged, motivated, and deeply connected to peers and adults around them.

10 ADDRESS BULLYING PROMPTLY

Quickly address any incidents of bullying. Promptly intervening demonstrates a clear commitment to an inclusive and safe environment. Creating a culture where incidents are swiftly and effectively addressed reinforces trust, security, and a sense of belonging for everyone involved.

Meet Our Expert

Anna Bateman is Director of Halcyon Education Ltd and Director for Wellbeing and Family Services at Leigh Trust. With extensive experience in systemic mental health in schools, she supports educational leaders across the UK to develop inclusive, resilient, and supportive learning environments. Anna is also the lead expert for mental health at The National College.



The National College®

Source: See full reference list on guide page at: nationalcollege.com/guides/fostering-a-sense-of-belonging